

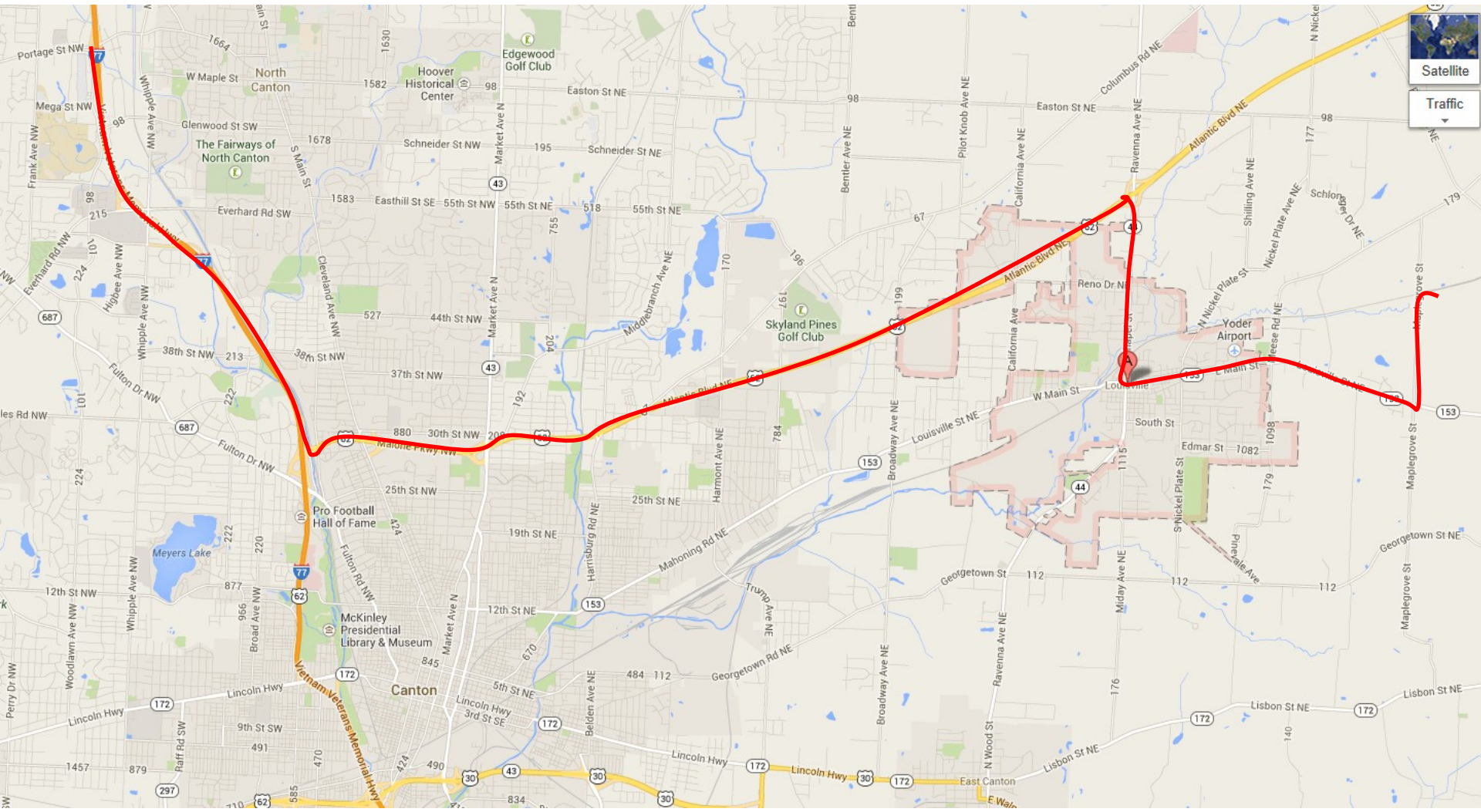
Map From Belden Village to Louisville sportsman's Club

Text Directions

- The Louisville Sportsman's Club
- 5300 Maplegrove Rd. Louisville OH 44641

From RT 62

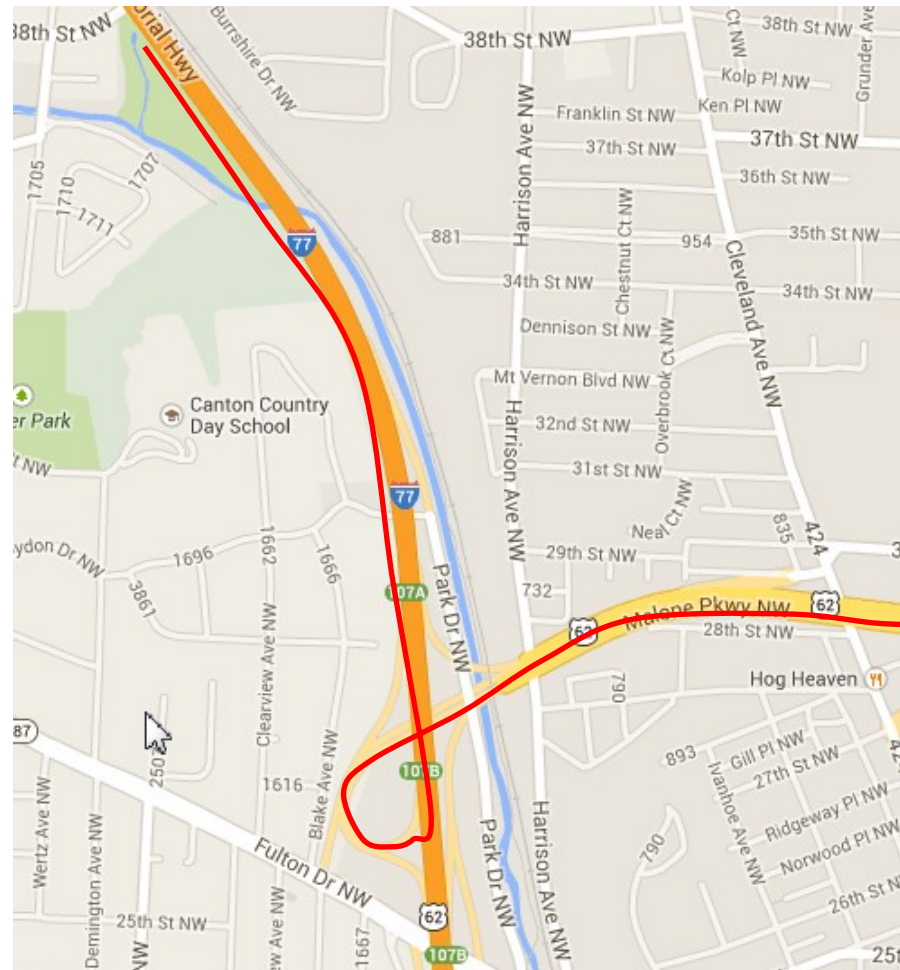
- head South on RT 44 till you come in to down town Louisville. You will see a BP GAS STATION, and GIANT EAGLE.
- This is RT 153/ Main street. **Head East (turn left)** on 153/ Main street for 2-3 miles.
- Maplegrove, turn left (North) on Maplegrove. Drive for aprox. 1 mile till you come to a set of rail road tacks.
- **DO NOT cross the tracks.** The sign for the club and drive way back to the club house is on your right (East).
- Take the long driveway back to the parking area.



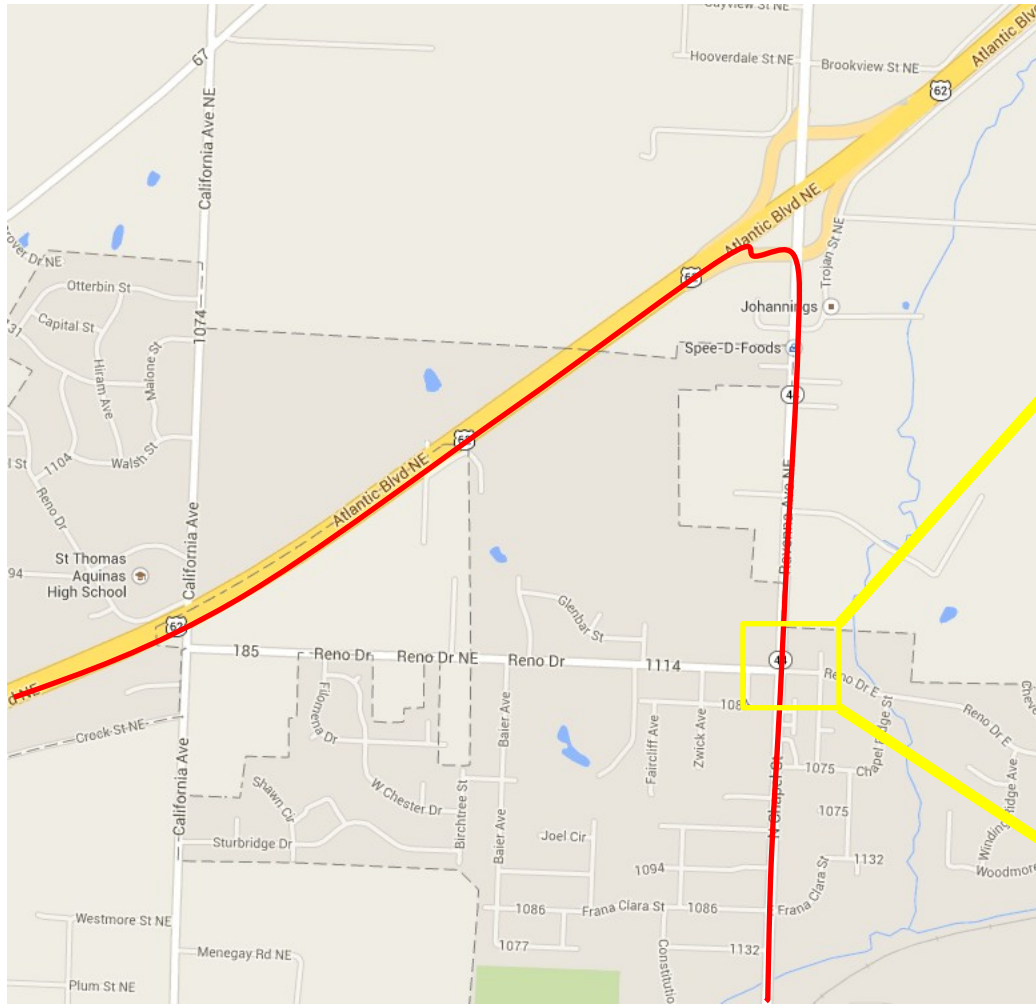
Satellite
Traffic



77 South to 62 East



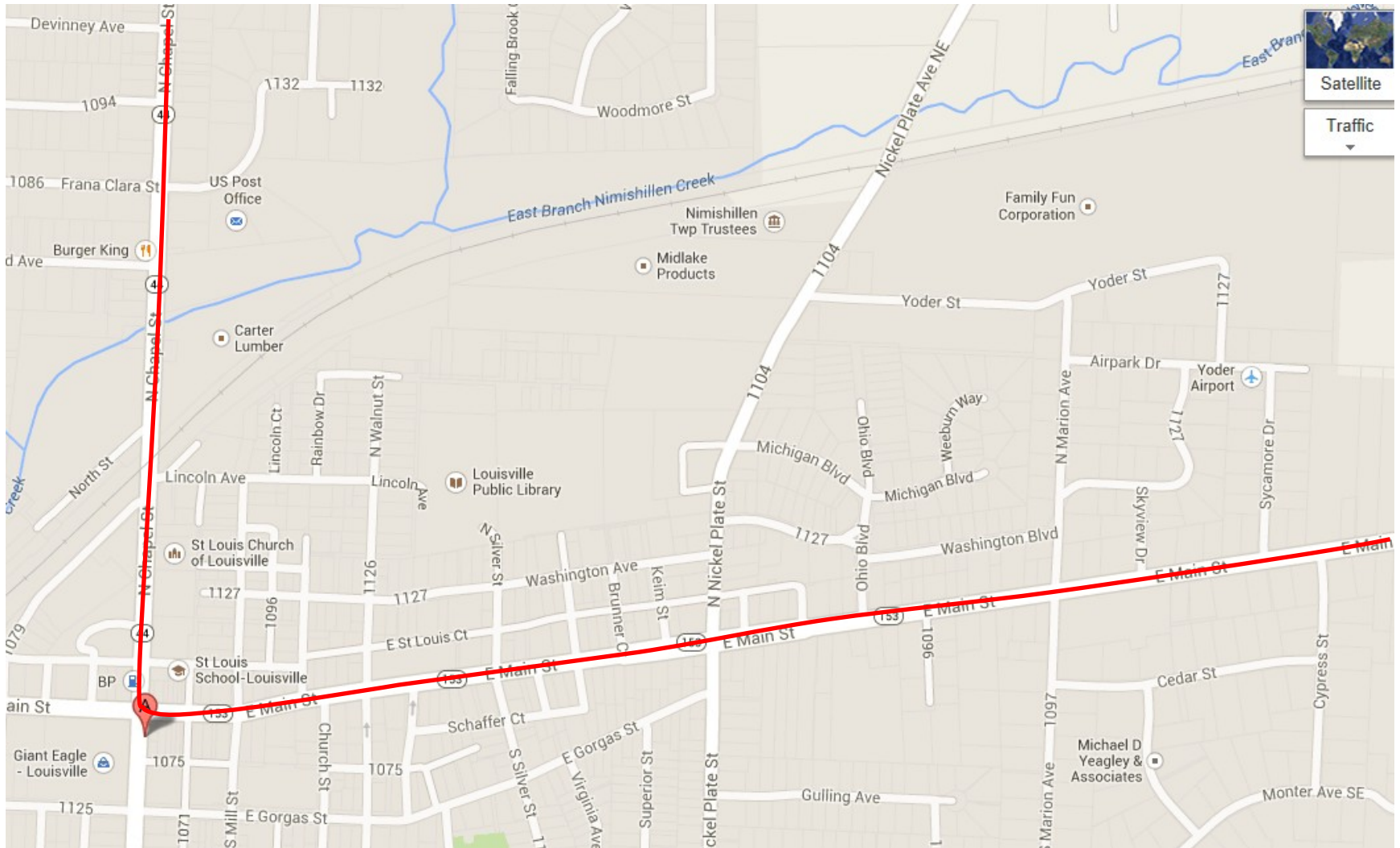
62 East to 44 South



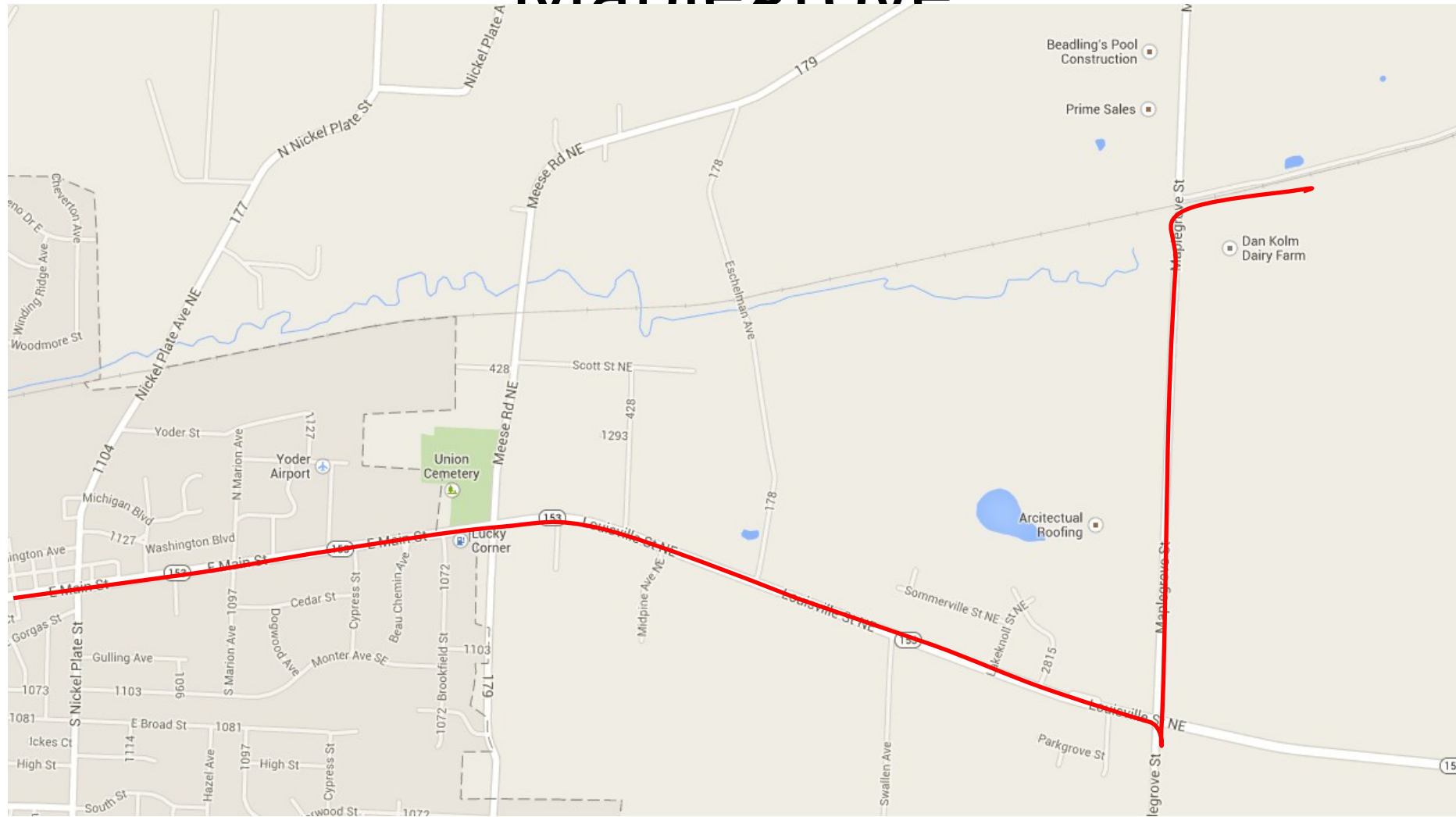
SENOR PANCHO'S



44 South to Center of Louisville (Route 153, East Main Street)



Follow 153 East ~3 miles to Maple Grove



North on Maplegrove to the Railroad tracks (~1 mile)

